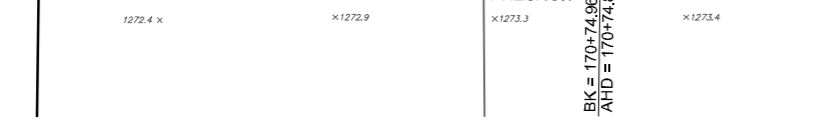
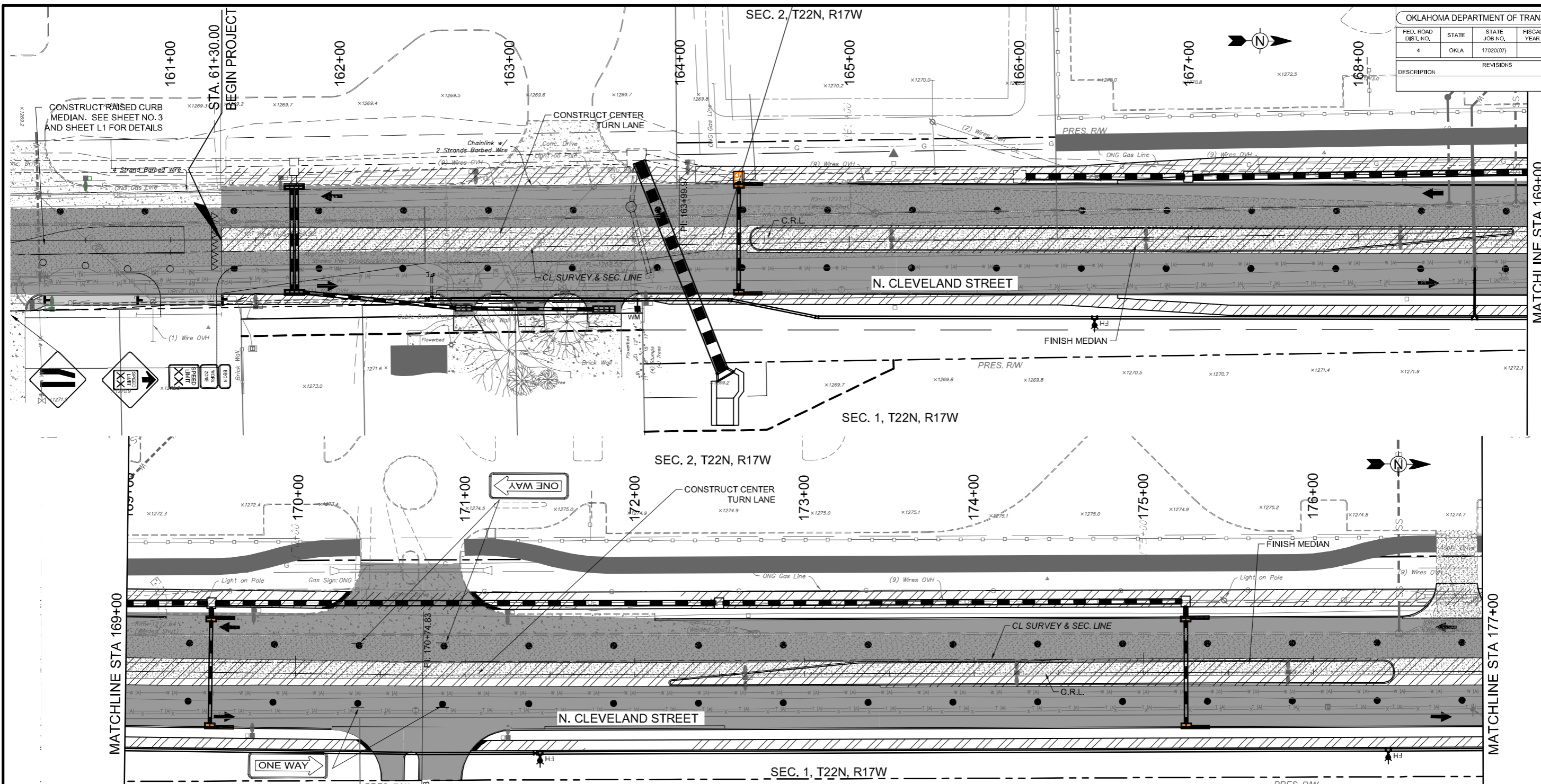


4/21/2017 6:22:49 PM - P:\2771\21\131-2771\2-1300\1\CAD\SHSHEET\FILESCLEVE BLVD PLANS\CONSTRUCTION\SEQUENCE PH.DWG - SCHUMACHER, MIKE

OKLAHOMA DEPARTMENT OF TRANSPORTATION					
FED. ROAD DIST. NO.	STATE	STATE JOB NO.	FISCAL YEAR	SHEET NO.	TOTAL SHEETS
4	OKLA	17020(07)		25	
DESCRIPTION			REVISIONS	DATE	



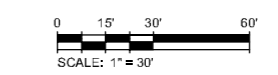
- NOTES:**
- WHERE WORK OCCURS IN CLOSE PROXIMITY TO TRAFFIC, UTILIZE THE 2009 MUTCD FIG. 6H-10 FOR "LANE CLOSURE ON A TWO-LANE ROAD USING FLAGGERS (TA-10)" DURING OFF-PEAK DAYLIGHT HOURS AS NEEDED.
 - REFERENCE ODOT TRAFFIC CONTROL STANDARDS TCS1-1, TCS2-1, TCS3-1, TCS4-1, TCS5-1, TCS6-1 & ROADWAY STANDARD PDT-1.
 - SEE ODOT TRAFFIC CONTROL STANDARD TCS21-1 FOR CONSTRUCTION ZONE PAVEMENT MARKING.

- SUGGESTED SEQUENCE OF CONSTRUCTION**
- PHASE 4:**
- SHIFT TRAFFIC TO OUTSIDE LANES
 - CONSTRUCT CENTER TURN LANE AND MEDIAN
 - COMPLETE SIGNS & STRIPING
 - OPEN ALL LANES

LEGEND

- WORK COMPLETED PREVIOUS PHASE
- WORK AREA
- TYPE III BARRICADE w/ TYPE "A" WARNING LIGHTS R11-2 (LANE)
- DRUMS
- DRUMS w/ W1-8(L)
- CHANNELIZING CONE
- SIGNAGE
- DIRECTION OF TRAVEL

CONTRACTOR SHALL MAINTAIN ACCESS TO ALL BUSINESSES AND DRIVEWAYS



DESIGN	X
DRAWN	CWT
CHECKED	JDH
APPROVED	JDH
SQUAD	Tt

N. CLEVELAND STREET

OKLAHOMA DEPARTMENT OF TRANSPORTATION

TCP - SEQUENCE OF CONSTRUCTION

PHASE 4 - SHEET 1

STATE JOB NO. 17020(07) SHEET NO. 25

CITY PROJECT R-1311B GARFIELD COUNTY